

Handouts from **CPCOA** Bull Trout Field trip held on 9/12/2010.

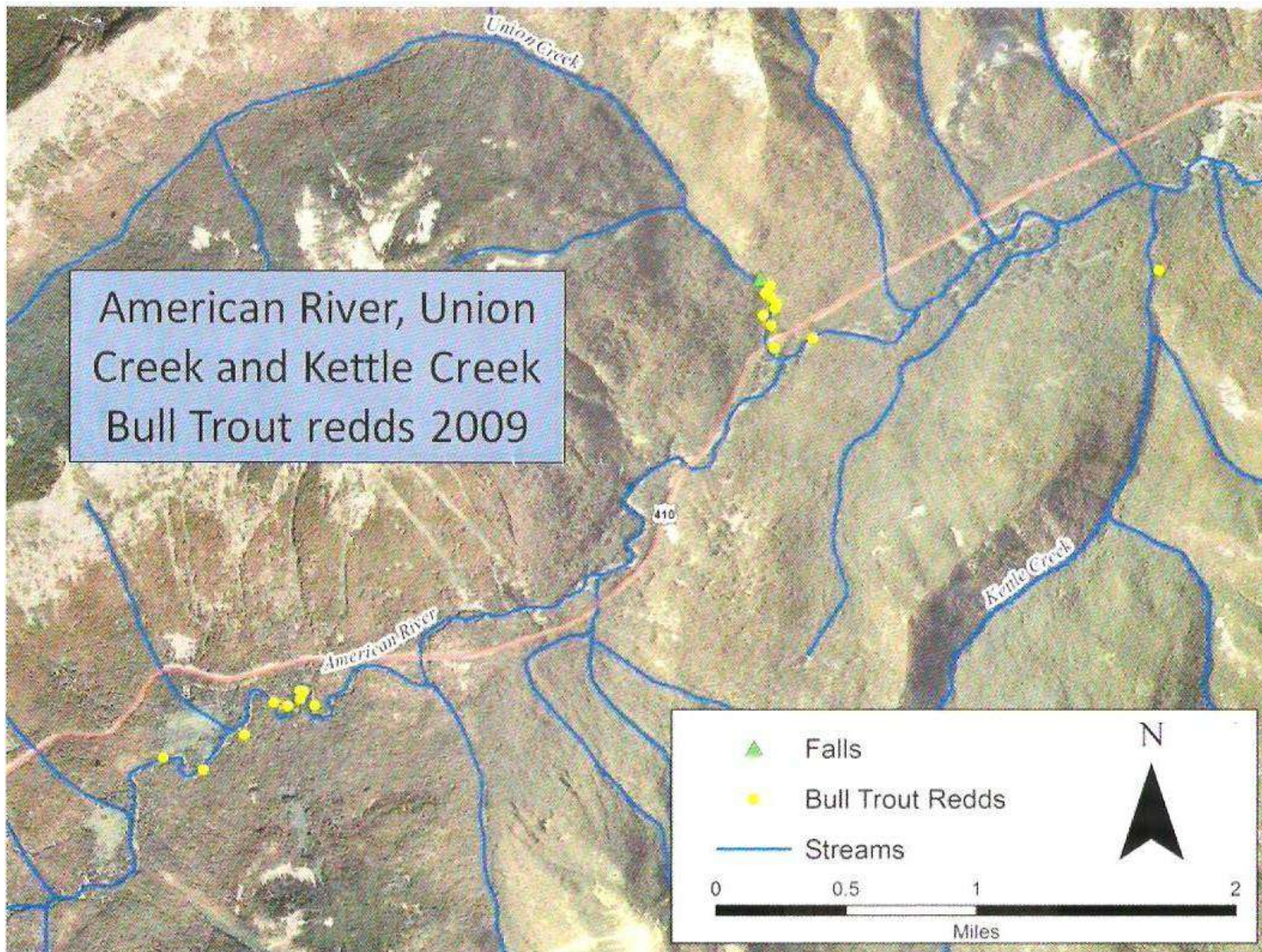
The first handout is a description of the Bull Trout species and can be found at:

<http://www.fws.gov/pacific/bulltrout/biology.html>

Note:

The following pages contain a map and a spreadsheet that were scanned from the original paper. This results in a higher file size and lower resolution which makes it harder to read. A request has been made for Gary to provide us with electronic versions of both of these pages. The CPCOA website will be updated with those files when they become available.

American River, Union
Creek and Kettle Creek
Bull Trout redds 2009



Summary of bull trout spawning surveys (redd counts) in index areas of the Yakima sub-basin, 1984-2009.																											
(R=Resident, F=Fluvial, F/R=Fluvial/Resident, AD=adfluvial). WDFW Files, Yakima, WA.																											
	1984	1985	1986	1987	1988	1989	1990	1991	1992	1993	1994	1995	1996	1997	1998	1999	2000	2001	2002	2003	2004	2005	2006	2007	2008	2009	
Yakima River (F)																											
Keechelus to Easton Reach *																		2	1		1			3	1		
Ahtanum Creek (R)																											
N.F. Ahtanum Cr. (Shellneck Cr.)										9	14	6	5	7	5	7	11	20	17	12		8	6	7	8	1	3
M.F. Ahtanum Cr. *													1	1		0	10	1	6	8		11	5	6	5	3	9
S.F. Ahtanum Cr. *																	5	14	13	7		5	3	4	5	3	6
Naches River (F)																											
Rattlesnake Cr. *																											
(L. Wildcat Cr., Shell Cr.)																											
American R. (Union Cr., Kettle Cr.)																											
Crow Cr.																											
Rimrock Lake (AD)																											
S.F. Tieton R. *																											
(Bear Cr.)																											
Indian Cr. *																											
N.F. Tieton (above Clear Lk)*																											
Bumping Lake (AD)																											
Deep Cr. *																											
Bumping River (upper)																											
N.F. Teanaway River (F/R)																											
NF Teanaway/DeRoux Cr. *																											
Kachess Lake (AD)																											
Box Canyon Cr.																											
Kachess R (upper) *																											
Keechelus Lake (AD)																											
Gold Cr.																											
Cle Elum & Waptus Lks																											
Cle Elum R.(up) & Waptus																											
Summary	36	75	40	50	37	59	134	232	239	247	404	446	595	615	593	630	704	504	548	490	475	457	531	478	687	795	
* Incomplete survey; index area not fully defined or adequately monitored: Yakima R. 2000, 2001, 2003, 2006. M.F. Ahtanum 1996-2001, 2008. S.F. Ahtanum 2000, Rattlesnake 1990-1995, 2007, 2008. S.F. Tieton 1990-1993, 1995, Indian 1984-1987, Deep 1989-1990, N.F. Teanaway 1996, 2005, 2006, 2008. Kachess 1998, 2005, 2006 Cle Elum 1996, 2000-2002, 2006, 2007, Waptus 1997, 1998, N.F. Tieton 2004, 2006, Bumping 1994, 2000, 2004, 2008. Box 2007, Gold 2007, Crow 2008. (Redds in small tribs (parenthesis) included in total stream count.)																											
* S.F. Tieton redd counts outside of the standard index area not included in above totals: 1995=0, 1996=7, 1997=1, 1998-2002 not checked, 2003=14, 2004=2, 2005=6, 2006=22, 2007 & 2008 not checked, 2009=30																											
* Exploratory redd count surveys conducted in 2009: N.F. Little Naches - 0, Quartz & N.F. Quartz - 0, Nile - 0, upper Crow (above barrier falls) - 0																											